

# MONTHLY MEMBERSHIP PROGRESS REPORT

District 11 E2

Results as of: 4/30/2026

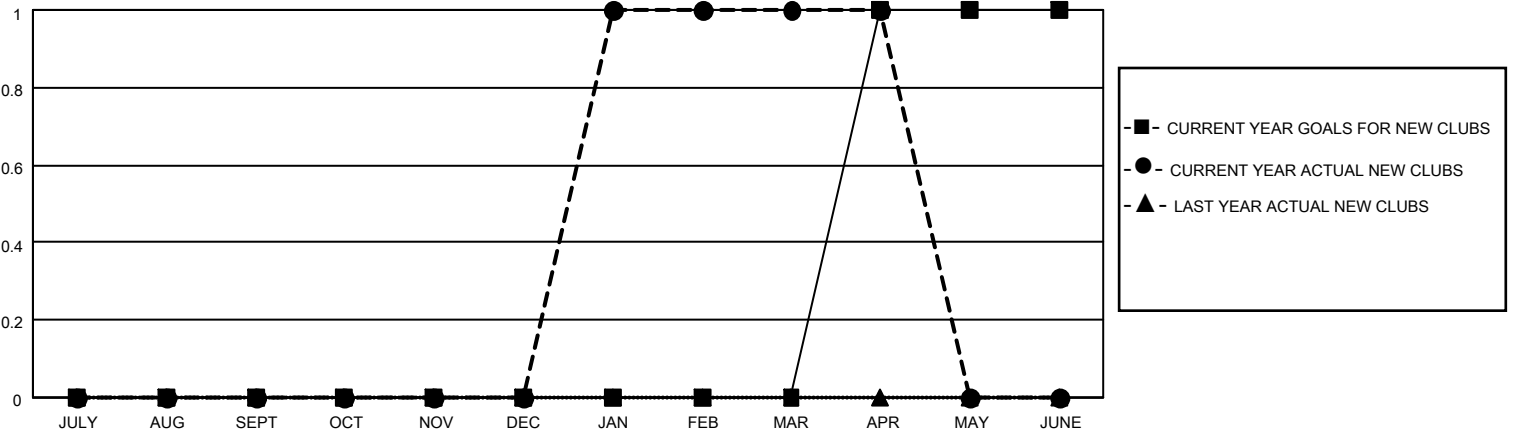
GMT:

LOCATION MICHIGAN

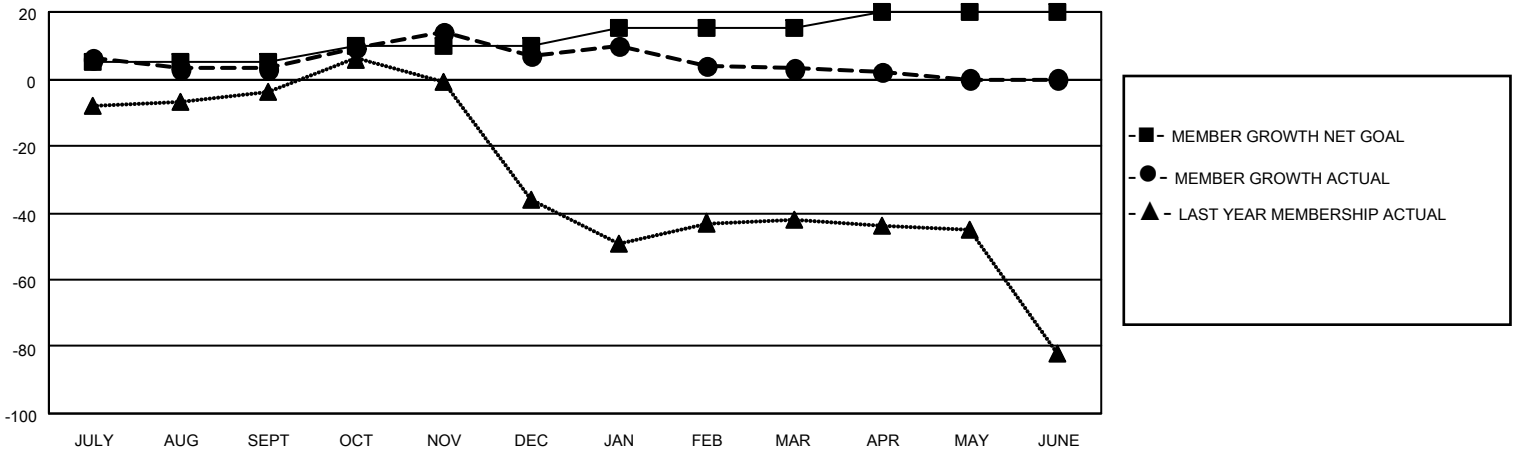
GMT CA

Clubs				Members			
RESULTS FOR 2025-2026				RESULTS FOR 2025-2026			
QUARTER	NEW CLUB GOAL	NEW CLUBS	DROPPED CLUBS	QUARTER	MEMBER GROWTH NET GOAL	MEMBER GROWTH ACTUAL	DROPPED MEMBERS ACTUAL (including transfers)
JULY/AUG/SEPT	0	0	0	JULY/AUG/SEPT	5	14	10
OCT/NOV/DEC	0	0	0	OCT/NOV/DEC	5	33	27
JAN/FEB/MAR	0	1	0	JAN/FEB/MAR	5	51	53
APR/MAY/JUNE	1	0	1	APR/MAY/JUNE	5	4	4

GOALS AND ACTUAL NEW CLUBS CUMULATIVE



GOALS AND ACTUAL MEMBERS CUMULATIVE



DROPPED CLUBS: 1	13 CLUBS OF 26 ADDED 1 OR MORE NEW MEMBERS	<b>GENDER DISTRIBUTION</b> MALE 428 (67.08%) FEMALE 210 (32.92%)
<b>DROPPED MEMBERS</b> DECEASED 17 CLUB CANCELLED 0 OTHER 77 TOTAL 94	<a href="#">CLICK HERE FOR CUMULATIVE MEMBERSHIP DATA</a>	TOTAL FAMILY UNIT MEMBERS 121 FAMILY MEMBERS PAYING HALF DUES 61